



ASX Shareholder Report

*Enquiries on this report
or other Company business
may be directed to:*

*Colin Jackson
Director
0400 892 612*

*David Paterson
Director
0417 823 654*

*Terramin is a dedicated
base metals company
focused on early
development of the
Angas Zinc project and
advanced exploration at
Menninnie Dam zinc/lead
and copper project – both
in South Australia.*

*Website Address:
www.terramin.com.au*

Mineral Claim pegged and Mining Lease Application lodged over Angas zinc resource

Terramin Australia Limited (ASX Code: TZN) confirms that it has lodged applications with Primary Industries and Resources SA (“PIRSA”) for a Mineral Claim and a Mining Lease over the Angas zinc resource.

Terramin has also delivered to PIRSA the Mining and Rehabilitation Program (“MARF”) document which describes and supports the proposal to establish a modern underground mine and conventional processing plant to produce zinc and silver/lead concentrates.

The MARF document includes independent surveys and detailed data on flora and fauna, soil surveys, ground water, traffic, noise, air emission and dust control. Development, ongoing mining and milling operations and mine closure plans are described in detail.

Terramin staff and contractors, including the recently appointed Roche Mining group are busy advancing project design and detailed cost estimates.

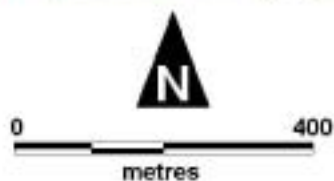
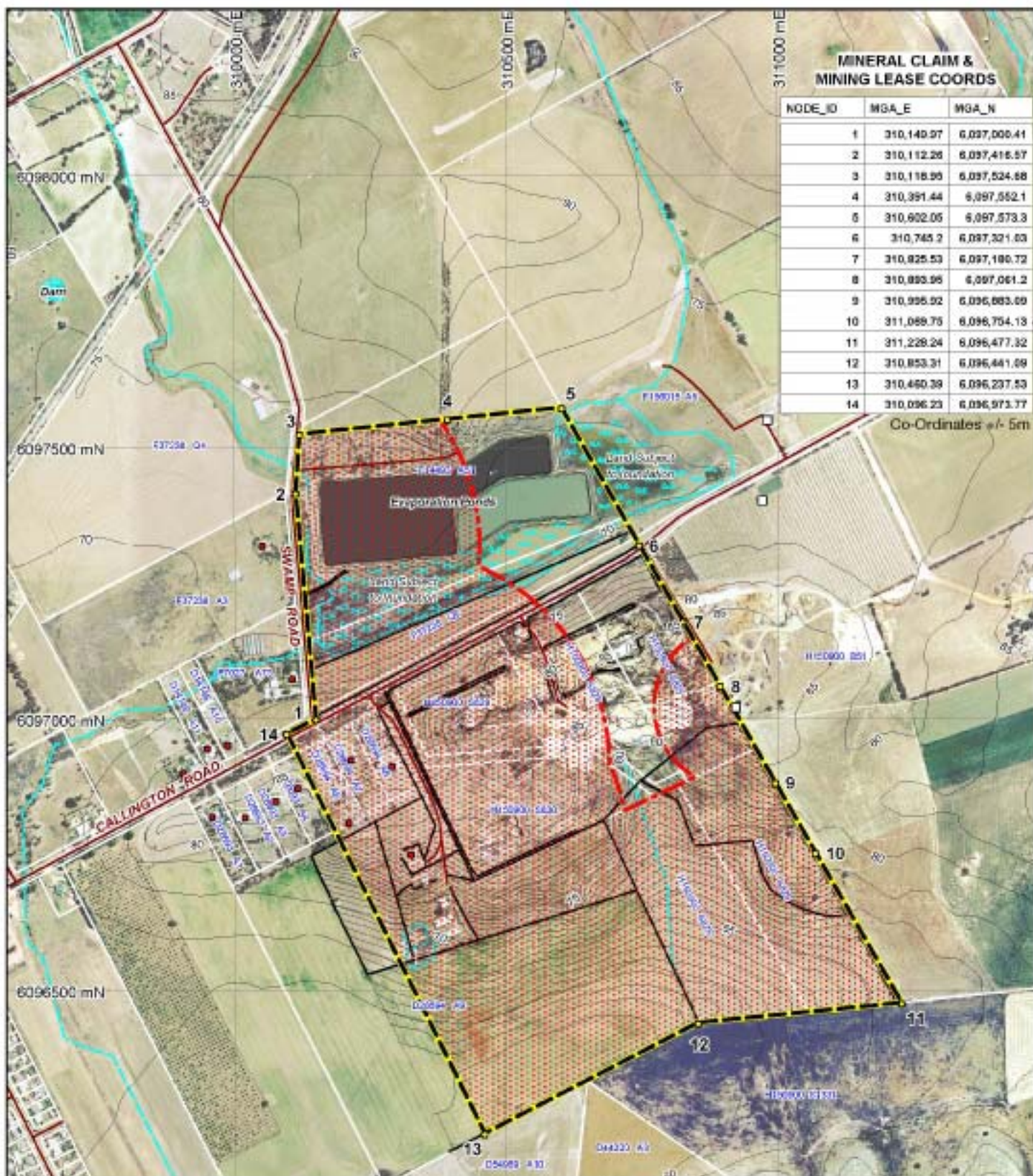
Work is continuing on a resource update incorporating results from an extensive and ongoing diamond drill program at Angas, with a targeted completion date next month.

The attached diagram shows the location and coordinates of the Mineral Claim and Mining Lease which cover an area of 87.6 hectares.

Detailed design and project evaluation remain on schedule for the targeted early 2007 commencement of operations.

David Paterson
Director

18 October 2005



-  Exempt Area
-  House
-  Fence
-  Shed
-  Proposed Mineral Claim and Mining Lease

The proposed mineral claim and mining lease do not follow a rectangular shape due to the fact that they follow property boundaries.

 **TERRAMIN AUSTRALIA Limited**

ANGAS ZINC PROJECT PROPOSED MINERAL CLAIM AND MINING LEASE LOCATION PLAN

Author: J. TREWARTHA	Scale: 1:10,000
Drawn: A. BONNER	Date: 20 09 2025
Projection: MGA Zone 54	Datum: GDA94
Plan No: TA_00021_LocationPlan	